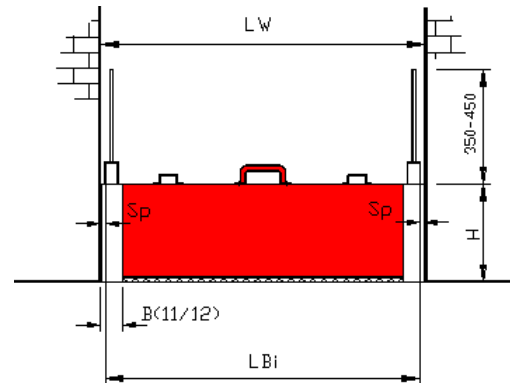


4.1 Retention barrier type BL/ST

Article root number: 711

Slide-insert Single pressure direction

Dimensions:		
Standard height		100 to 500 mm
Special situations	up to	600 mm
Standard length	up to	6000 mm
Special situations	up to	8000 mm
Width		50 mm



4.1.1 Description

Suitable for crack-free surfaces with up to 20 mm (± 10 mm) of floor/ground unevenness, e.g. concrete, corrugated sheet metal, tiles, stones, etc.

The water retention partition is comprised of a rectangular, integral hollow aluminium profiled body. A compressible, highly adaptable special seal is affixed to the lower side.

The closure body is set into two mounting devices. These mounting devices are securely mounted next to the opening to be protected or within the doorjamb and tightly sealed against the building or structure. A vertical tensioning device is located on each of the

mounting units (tension mounts). With these tensioning devices, the necessary force can be applied to secure the barrier body into place, press it against the seal of the mount and compress the floor/ground seal. A tightly sealed closure is thus guaranteed. The contact pressure is adjustable.

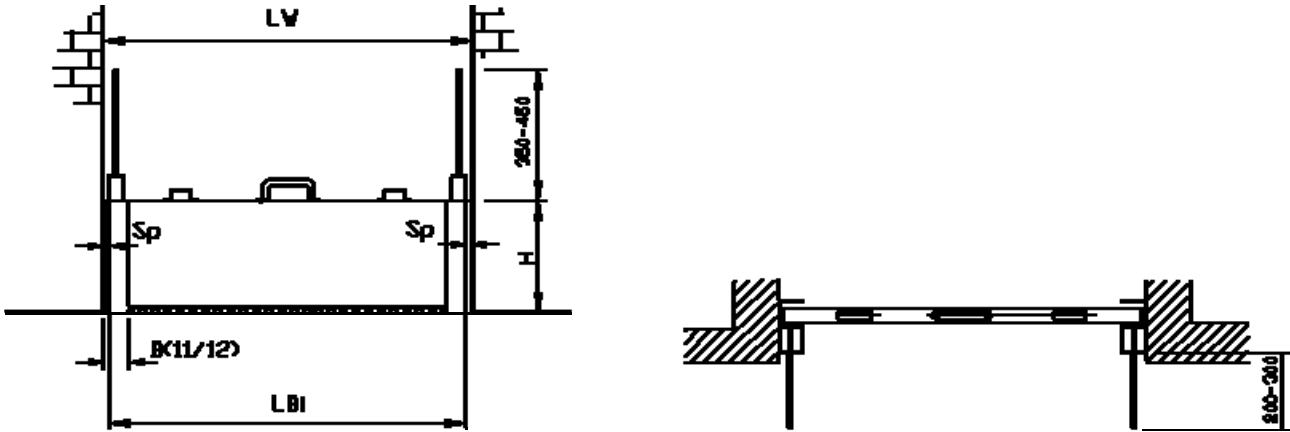
Wall mounts are included in the product package to provide for orderly storage.

Barrier bodies and mounting fixtures are furnished with a red paint finish, preferably "traffic red" RAL 3020. The remaining metal components are galvanized or made of aluminium.

Features:

- Ease of use
- Design-tested as basic model BL/BST (LGA, Wuerzburg, Germany)
- Quality-monitored (Ing.-Büro Blobel, Friedberg, Germany)
- Tested by the fire-fighting industry as basic model BL/BST (IdF, Fire Brigade Institute, Heyrothsberge, Germany)

4.1.2 Drawing – installation "within the jamb"



BL / ST (Barrier - slide-insert)

Table of dimensions for specified dimension LBi (LBi = barrier length, within the jamb)

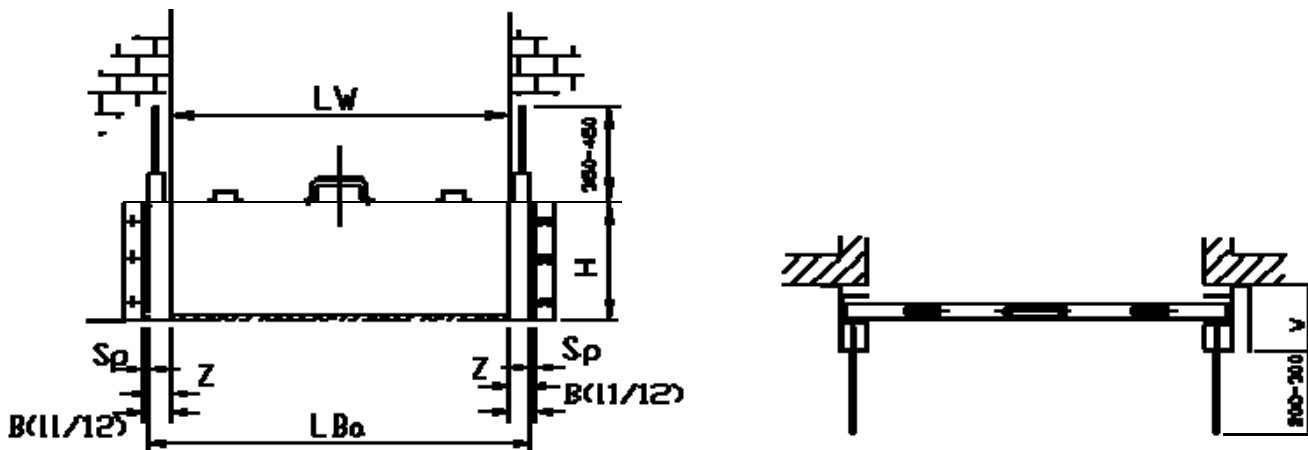
B11 / 70

Height H [mm]	LWi [mm]		B11
100	up to 5000	$B_1 = 70 \text{ mm}$ $LBi = Lw - (2 \times Sp_{11})$ $Sp_{11} = 15 \text{ mm}$	
150	up to 4000		
200	up to 3000		
250	up to 2500		
300	up to 2000		
350, 400	up to 1000		
450, 500 550, 600			

B12 / 90

Height H [mm]	LWi [mm]		B12
150	over 4000	$B_2 = 90 \text{ mm}$ $LBi = Lw - (2 \times Sp_{12})$ $Sp_{12} = 20 \text{ mm}$	
200	over 3000		
250	over 2500		
300, 350	all lengths		
400, 450 500, 550 600			

4.1.3 Drawing – installation "in front of the jamb"



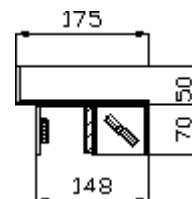
BL / ST (Barrier - slide-insert)

Table of dimensions for specified dimension LBa (LBa = barrier length, outside of jamb)

B11 / 70

Height H [mm]	LWa [mm]	
100	up to 5000	$LBa = LW + 2 \times Z_{11}$ $Z_{11} = \text{ad measurement} = 60 \text{ mm}$ $Sp_{11} = 15 \text{ mm}$ $W_{11} = 175 \text{ mm/standard}$ $B_{11} = 70 \text{ mm}$
150	up to 4000	
200	up to 3000	
250	up to 2500	
300	up to 2000	
350, 400	up to 1000	
450, 500 550, 600		

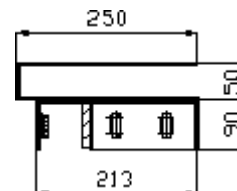
B 11



B12 / 90

Height H [mm]	LWa [mm]	
150	over 4000	$LBa = LW + 2 \times Z_{12}$ $Z_{12} = \text{ad measurement} = 80 \text{ mm}$ $SP_{12} = 20 \text{ mm}$ $W_{12} = 250 \text{ mm}$ $B_{12} = 90 \text{ mm}$
200	over 3000	
250	over 2500	
300, 350	all lengths	
400, 450		
500, 550 600		

B 12



Europe

Blobel Umwelttechnik GmbH

Ziegeleistraße 5
86368 Gersthofen, Germany

Telephone: +49 (0)821 498190-0
Telefax: +49 (0)821 498190-30

email: info@blobel.de
Web: www.blobel.de

North America / Canada

BLOBEL Environmental Engineering LLC

270 Presidential Drive
Wilmington, Delaware 19807, USA

Telephone: +1 302-353-1555
Telefax: +1 302-288-3753
Mobile: +1-215-666-2267

email: info@blobel.us
Web: www.blobel.com

Asia / Pacific / South America

Blobel Environmental Engineering

6/41 Belgrave Street
Sydney NSW 2024, Australia

Telephone: +61 (0)2/93 69 35 04
Mobile: +61 (0) 4 19 27 94 81

email: mail@blobel.com
Web: www.blobel.com